

## A Result Paper On Tranzo: A Smart Commercial Vehicle Platform

G. G. Sayyad<sup>1</sup>, Yash P. Barge<sup>2</sup>, Vishwajit K. Bhosale<sup>3</sup>, Fardin S. Dange<sup>4</sup>, Aniket V. Deshmukh<sup>5</sup>

<sup>1,2,3,4,5</sup>Department of Computer Science and Engineering, S. B. Patil College of Engineering, Indapur, Pune

<sup>2</sup>bargeyash07@gmail.com, <sup>3</sup>vishwajitbhosale947@gmail.com, <sup>4</sup>fardindange01@gmail.com, <sup>5</sup>aniketvd2004@gmail.com

Peer Review Information	Abstract
<p><b>Type:</b> Article <b>Received:</b> 22 March 2026 <b>Revised:</b> 06 April 2026 <b>Accepted:</b> 24 May 2026 <b>Published:</b> 05 June 2026</p>	<p>The project, Tranzo: A Smart Commercial Vehicle Platform, presents an AI- and ML-enabled logistics solution designed to protect cargo, improve driver safety, and strengthen fleet management in the transportation sector. The system integrates GPS-based vehicle tracking with real-time weather forecasting APIs to monitor rainfall, humidity, temperature, and wind speed along the active route of a commercial vehicle. A cargo-specific rule engine analyzes these environmental conditions and generates timely preventive alerts according to the sensitivity of the goods in transit. For example, the system can warn drivers carrying grains to secure the load during expected rainfall, while vehicles transporting frozen or temperature-sensitive goods receive alerts when rising temperatures threaten cargo quality.</p> <p>The platform delivers alerts through multiple channels, including mobile notifications, SMS, and IVR voice calls, with multilingual communication support for practical field use across different regions. A fleet dashboard provides live vehicle monitoring, weather-triggered alert logs, and summary reports to support better operational decisions. By combining predictive intelligence, cloud-based accessibility, and user-oriented interfaces, Tranzo reduces cargo loss, delays, and manual error while improving transparency and reliability in logistics operations.</p> <p>Overall, the system demonstrates how Artificial Intelligence, Machine Learning, and real-time data integration can modernize commercial transportation into a more predictive, efficient, and sustainable logistics framework.</p> <p><b>Keywords:</b> Smart Logistics; Cargo Protection; Weather Forecasting; Fleet Management; Artificial Intelligence in Transportation; GPS Tracking; Real-Time Alert System.</p>

### How to Cite This Article

Sayyad, G. G., Barge, Y. P., Bhosale, V. K., Dange, F. S., & Deshmukh, A. V. (2026). A result paper on Tranzo: A smart commercial vehicle platform. *International Journal of Electrical, Electronics and Computer Systems*, 15(1), 15–20.

## Introduction

The logistics and transportation industry plays a vital role in trade, industrial supply chains, and economic continuity. In India, commercial transport vehicles carry agricultural goods, construction materials, frozen products, textiles, and industrial cargo across diverse geographical and climatic regions. However, transportation operations remain vulnerable to unpredictable environmental conditions, inconsistent communication, and limited real-time risk monitoring.

Sensitive cargo such as grains, frozen foods, electronics, and textiles can be damaged by rainfall, excessive heat, high humidity, or strong wind. Conventional tracking systems mostly focus on navigation, trip monitoring, and route optimization, but they do not typically provide cargo-aware, weather-specific, preventive alerts. As a result, many logistics operations remain reactive rather than predictive.

Tranzo addresses this challenge through an integrated smart commercial vehicle platform that combines GPS tracking, weather forecasting APIs, a cargo-specific rule engine, and multi-channel communication. The platform enables drivers and fleet managers to receive timely alerts and take preventive action before cargo conditions become unsafe. This shift from passive monitoring to predictive logistics helps improve cargo protection, operational reliability, and decision-making efficiency.

## Literature Survey

[1] R. Sharma and P. Verma (2023) addressed the challenge of short-term localized weather prediction in transportation and logistics environments. Their study showed that AI-based forecasting models can improve route-level weather understanding and support better operational planning. Future enhancements include tighter coupling with transport alert systems.

[2] M. Khan and S. Iyer (2022) presented an IoT-enabled smart fleet monitoring approach focused on real-time visibility and environmental sensing. Their work demonstrated the value of combining GPS and live sensor data to track transport conditions more effectively. Future work points toward predictive logistics risk scoring.

[3] L. Fernandez and A. Gupta (2021) developed a cloud-based logistics platform to centralize route planning, communication, and transport record management. While the platform improved coordination, it did not deeply integrate weather-aware cargo risk intelligence. Future scope includes intelligent route and safety integration.

[4] J. Peterson and K. Rao (2020) proposed a rule-based disruption prediction model for supply chains using external risk factors such as weather and traffic. Their system showed that rule engines can offer transparent and explainable preventive alerts. Future research may include adaptive machine learning for dynamic rule refinement.

[5] S. Desai and T. Kulkarni (2024) studied multilingual alert delivery for transportation networks. Their results showed that accessibility improves significantly when alerts are communicated through regional languages across multiple notification channels. Future scope includes AI-based conversational alert assistants.

[6] S. Mohammed, L. N. Patel, and H. K. Rao (2020) explored weather-aware embedded systems for connected vehicles. Their work highlighted the importance of hyperlocal weather observations for transportation safety and argued for integrating localized intelligence into live vehicle systems.

[7] Salim Ahmad, Priya Menon, and R. K. Sharma (2024) examined AI-powered logistics and route optimization methods. Their findings indicated that adaptive intelligence can reduce delays and improve cargo safety when route conditions are analyzed continuously.

[8] K. Bi, L. Xie, H. Zhang, X. Chen, and Q. Tian (2022) demonstrated how high-resolution weather models can support fast and accurate forecasting. While their work operated at a broader scale, its relevance to logistics lies in improving upstream weather intelligence for decision systems such as Tranzo.

[9] N. Gupta, R. Kumar, and M. Agrawal (2022) integrated IoT and AI for smart predictive systems using real-time environmental data. Their study reinforced the need for connected, data-driven architectures in operational monitoring environments.

[10] R. K. Sharma, S. Jain, and T. Patel (2022) analyzed how environmental variables affect predictive models in decision systems. Their research emphasized that rainfall, temperature, and humidity are strong contributors in forecasting risk-sensitive outcomes.

## System Overview and Design

The Tranzo system is designed as an AI- and cloud-based smart logistics platform that integrates real-time data acquisition, centralized fleet monitoring, and predictive analytics. The system follows a modular and scalable architecture, enabling seamless interaction between

front-end applications and backend services for efficient cargo management, route monitoring, and weather-based risk alert generation.

### System Design

Tranzo provides a unified platform for managing logistics operations such as vehicle tracking, cargo monitoring, route management, and fleet performance analysis. The system supports multiple user roles, including administrators, fleet managers, and drivers, with role-based access control to ensure secure and efficient data handling.

The platform integrates real-time weather forecasting and GPS-based tracking to monitor environmental conditions along vehicle routes. A cargo-specific rule engine analyzes this data and generates preventive alerts to protect sensitive goods. All processed data is stored in a cloud-based database and presented through an interactive dashboard, enabling better decision-making and operational transparency.

### System Architecture

The overall system architecture of Tranzo represents the flow of data from commercial vehicles and users to the backend and database layers. Drivers and fleet managers interact with the frontend application, which processes requests through various service modules such as route tracking, weather monitoring, and alert management.

These service modules communicate with the backend system to handle authentication, data processing, and integration with external APIs such as weather forecasting services and GPS mapping systems. The cargo-specific rule engine evaluates environmental conditions against predefined thresholds to detect potential risks.

The processed data is then stored in a centralized database and retrieved to generate real-time alerts and dashboard visualizations. Fleet managers can monitor vehicle status, route conditions, and alert history, enabling informed decision-making.

This layered architecture ensures modularity, scalability, and efficient data flow, making the Tranzo system reliable and adaptable for modern logistics operations.

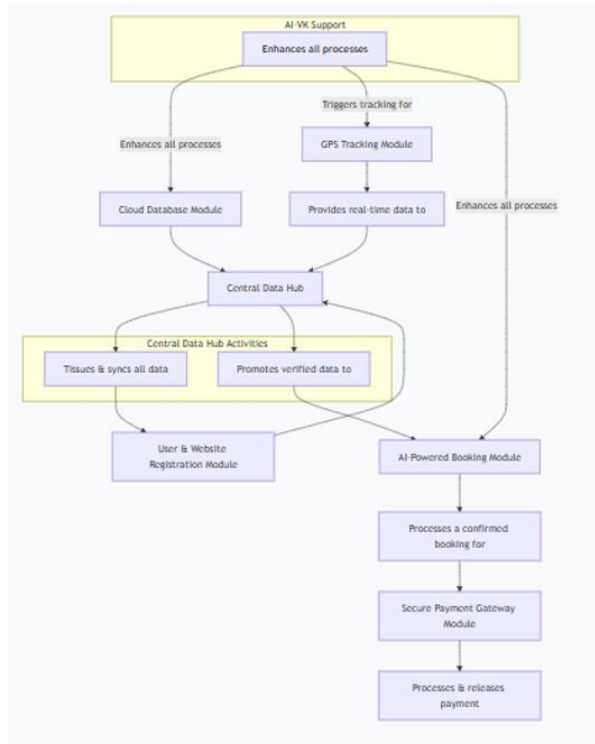


Fig. 1. System Architecture Flow Diagram of Tranzo

### Methodology

The development of Tranzo follows a structured workflow to ensure accuracy, responsiveness, and scalability in logistics operations.

#### Data Collection and Preprocessing

The system depends on multiple real-time and historical data sources.

- Vehicle and Route Data: GPS coordinates are collected from active commercial vehicles. Route information, trip status, and

vehicle categories are stored in the platform database. Data validation is performed to maintain consistency across driver, vehicle, and trip records.

- **Weather and Cargo Data:** Live weather data such as rainfall, humidity, temperature, and wind speed is fetched using forecasting APIs. Cargo profiles define sensitivity thresholds for different environmental conditions. Data normalization and threshold mapping are applied before further analysis.

### *Intelligent Risk Engine*

Tranzo incorporates analytical components to evaluate environmental risks.

- **Route-Aware Weather Monitoring:** Weather data is mapped to the vehicle's current route coordinates. The system continuously checks whether environmental conditions exceed predefined cargo thresholds.
- **Cargo-Specific Rule Engine:** A rule engine analyzes environmental risks based on cargo type and generates preventive alerts for drivers and fleet managers. The computational complexity of rule evaluation is expressed as:

$$T(n) = O(n) \quad (1)$$

where  $n$  represents the number of active cargo rules.

### *System Development and Integration*

- **User Interface Layer:** A React-based interface is used to support drivers, customers, and administrators. Dashboards provide real-time trip visibility, alerts, and operational control.
- **Application Logic Layer:** A Django REST backend manages authentication, trip processing, weather data ingestion, and alert generation. JWT-based authentication ensures secure access for different user roles.
- **Data Storage Layer:** A relational database is used to store user data, vehicle information, trip history, weather logs, and alerts. The schema is optimized for scalable data retrieval and reporting.

### *External Services Integration*

The system integrates third-party services to enhance functionality. Weather forecasting APIs provide real-time environmental data, while GPS and mapping services determine vehicle location and route context. SMS and IVR services are used to deliver alerts through multiple communication channels.

### *System Workflow*

- **Driver Workflow:** The driver logs into the system and starts the trip. The platform captures vehicle location and trip details. Weather data is continuously fetched and compared with cargo thresholds. If unsafe conditions are detected, alerts are generated and notifications are sent.
- **Fleet Manager Workflow:** The fleet manager monitors all vehicles through a centralized dashboard. The system displays route risk levels, alert history, and summary reports. Operational decisions are taken based on real-time insights and recommendations.

## **Results**

The Tranzo platform was structured and evaluated as a predictive logistics support system focused on cargo protection and fleet monitoring. The weather-integrated monitoring pipeline successfully supports route-aware risk assessment by checking live or forecasted weather conditions against cargo-specific thresholds. This makes the platform more practical than ordinary tracking-only systems.

The rule engine provides clear benefits by generating interpretable alerts rather than raw environmental values alone. The multi-channel communication model improves the likelihood that important warnings reach the driver in time. The fleet dashboard improves visibility by consolidating trip status, route conditions, and alert history in one interface.

From a usability perspective, the platform architecture supports both mobile-friendly driver interactions and dashboard-based fleet supervision. The use of modular services, role-based access, and cloud-compatible design also makes the platform extensible for future logistics features such as live maps, automated payouts, route optimization, and insurance-linked workflows.

A key limitation of the current paper version is that the result presentation depends on the screenshots and diagrams the project team inserts into the final document. Accordingly, image placeholders have been added below to make the paper ready for project visuals.

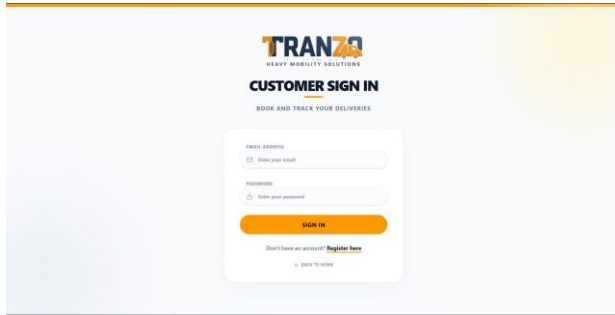


Fig. 2. Login Page

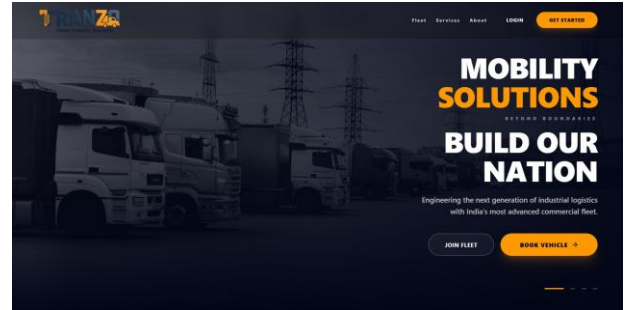


Fig. 3. Welcome Page

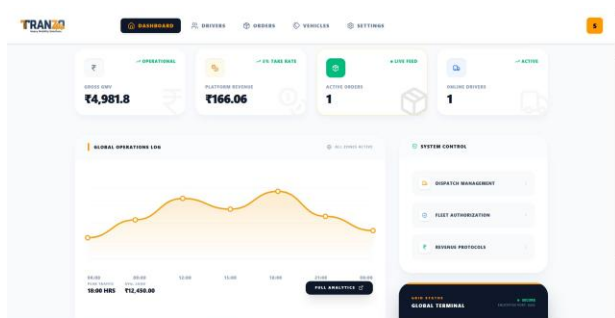


Fig. 4. Admin Dashboard

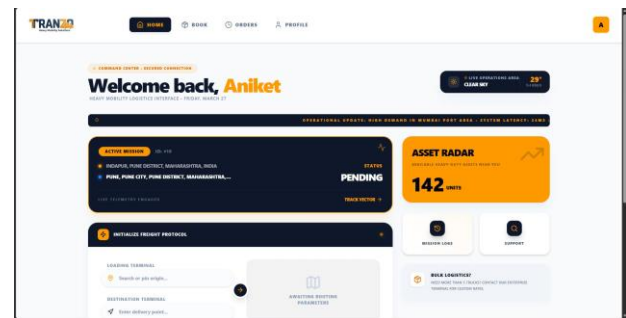


Fig. 5. Home Page

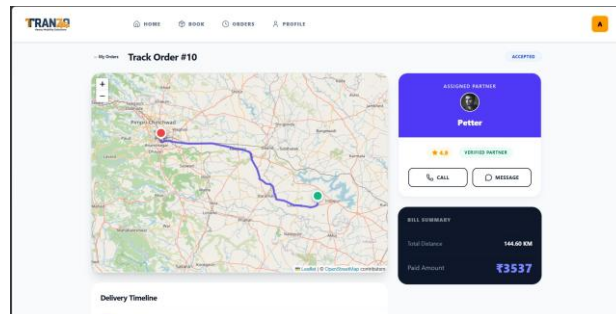


Fig. 6. Order History

## Applications

The proposed Tranzo system can be effectively utilized in various logistics and transportation domains to enhance operational efficiency, cargo safety, and fleet management. Key application areas include:

- **Logistics and Transportation Companies:** Enables efficient tracking of commercial vehicles, cargo monitoring, and route management through a centralized digital platform.
- **Fleet Management Systems:** Assists fleet managers in monitoring vehicle performance, tracking routes, and managing alerts to improve operational efficiency.
- **Cargo Safety Management:** Provides real-time weather-based alerts to protect sensitive goods such as agricultural products, pharmaceuticals, and perishable items.
- **Supply Chain and Distribution:** Enhances decision-making by providing predictive insights on environmental risks and delivery conditions across supply chains.
- **Driver Assistance Systems:** Supports drivers with real-time notifications, route-based risk alerts, and safety recommendations during transit.
- **Smart Logistics Platforms:** Contributes to the development of intelligent logistics ecosystems by integrating AI, GPS tracking, and real-time data analytics.

## Future Work / Enhancement

The proposed Tranzo system can be further enhanced by incorporating advanced features to improve automation, scalability, and intelligence in logistics operations. The following enhancements are identified for future development:

- **Advanced Predictive Analytics:** Integrate machine learning models to predict potential risks such as route delays, cargo damage probability, and weather impact in advance for proactive decision-making.
- **Real-Time Map Integration:** Incorporate live map visualization with dynamic route tracking, traffic conditions, and rerouting suggestions based on environmental and road conditions.
- **Automated Route Optimization:** Implement intelligent algorithms to suggest optimal routes considering weather, traffic, and cargo sensitivity to minimize risk and delivery time.
- **IoT Sensor Integration:** Use IoT-based sensors for real-time monitoring of cargo conditions such as temperature, humidity, and vibration inside the vehicle.
- **Multilingual Voice Assistant:** Develop an AI-based voice assistant to provide real-time alerts and instructions to drivers in multiple regional languages.
- **Offline Functionality:** Enable limited offline capabilities for drivers in low-network areas, ensuring critical alerts and data synchronization once connectivity is restored.
- **Blockchain-Based Data Security:** Integrate blockchain technology to ensure secure, tamper-proof storage of logistics data and transaction records.
- **Insurance and Risk Integration:** Connect with insurance systems to automatically evaluate and process claims based on recorded environmental and trip data.

Tranzo successfully demonstrates how Artificial Intelligence, Machine Learning, real-time weather data, and route-aware monitoring can be combined to improve logistics and transportation safety. By integrating GPS tracking

## Conclusion

Tranzo successfully demonstrates how Artificial Intelligence, Machine Learning, real-time weather data, and route-aware monitoring can be combined to improve logistics and transportation safety. By integrating GPS tracking with environmental analysis and cargo-specific rules, the platform shifts logistics management from re-active monitoring to predictive decision support.

The system improves cargo safety, helps drivers respond to environmental risk in time, and provides fleet managers with a centralized operational view. Multi-channel alerts, modular architecture, and a role-based platform design make Tranzo practical for real-world commercial vehicle workflows.

Although further work can enhance model sophistication, live map integration, and automation depth, the current system already serves as a strong and scalable foundation for smart logistics. Overall, Tranzo presents an effective and innovative approach for building a safer, more intelligent, and more sustainable commercial transportation ecosystem.

## References

1. R. Sharma and P. Verma, "AI-Based Weather Forecasting Systems," 2023.
2. M. Khan and S. Iyer, "IoT-Enabled Smart Fleet Monitoring," 2022.
3. L. Fernandez and A. Gupta, "Cloud-Based Logistics Management Platform," 2021.
4. J. Peterson and K. Rao, "Rule-Based Risk Prediction in Supply Chains," 2020.
5. S. Desai and T. Kulkarni, "Multilingual Alert Systems for Transportation Networks," 2024.
6. S. Mohammed, L. N. Patel, and H. K. Rao, "Embedded Weather Systems for Connected Vehicles," 2020.
7. S. Ahmad, P. Menon, and R. K. Sharma, "AI Powered Logistics and Route Optimization for Faster Deliveries," 2024.
8. K. Bi, L. Xie, H. Zhang, X. Chen, and Q. Tian, "High Resolution Weather Forecast Models," 2022.
9. N. Gupta, R. Kumar, and M. Agrawal, "Integrating IoT and AI for Smart Monitoring Systems," 2022.
10. R. K. Sharma, S. Jain, and T. Patel, "Weather Impact on Predictive Models," 2022.